

# PERCH DISSECTION

*pictures to go along with lab*

Sources used to put presentation together:

Pictures from Mr. Tippet's Biology Class at

<http://www.flushing.k12.mi.us/srhigh/tippetl/biology/perch/index.html>

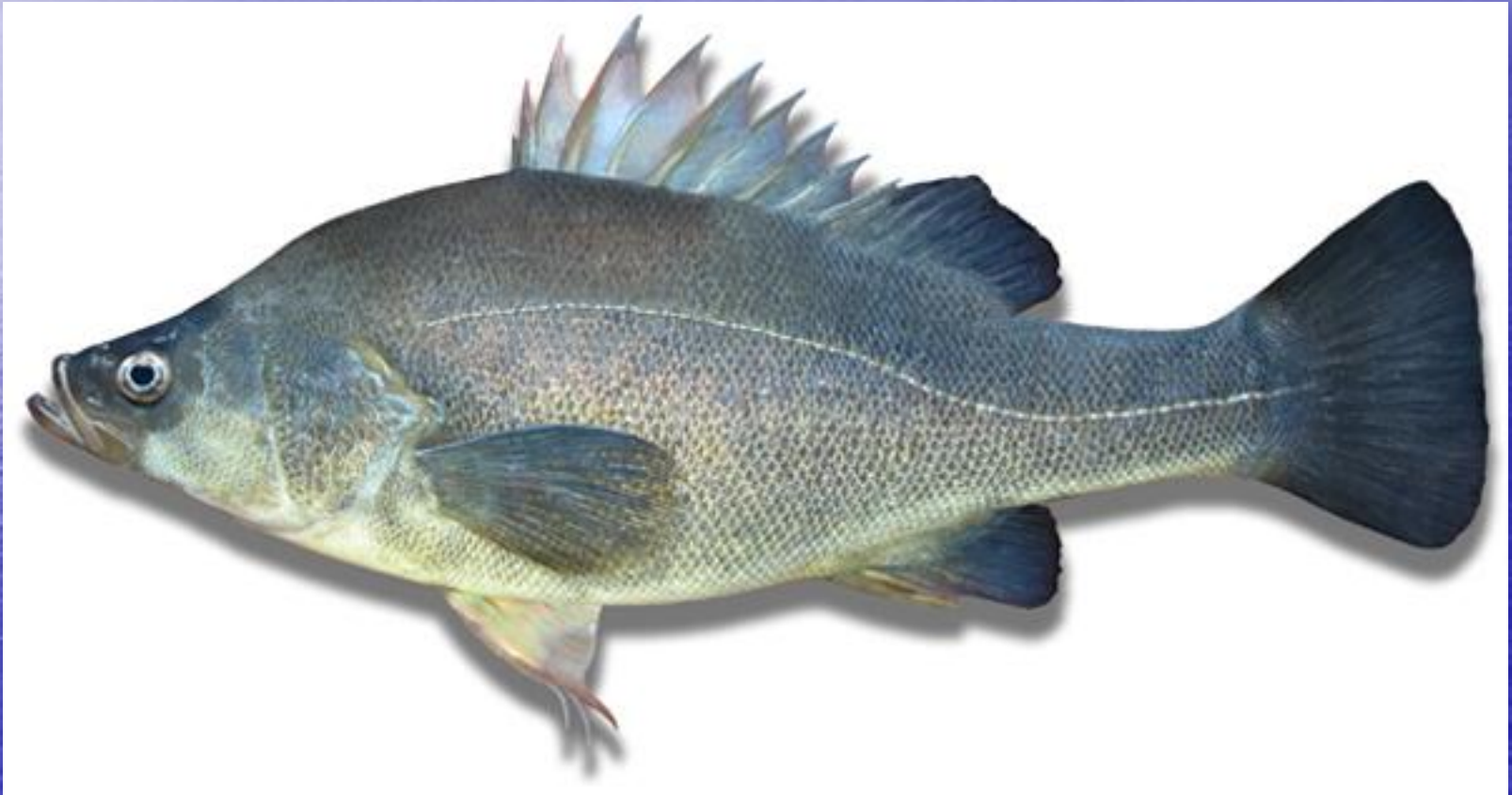
Lab modified from Massengale's Biology Place found at

[http://sps.k12.ar.us/massengale/perch\\_dissection2.htm](http://sps.k12.ar.us/massengale/perch_dissection2.htm)



# EXTERNAL ANATOMY

Locate the 3 body regions of the perch





Locate and label the upper jaw or maxilla and the lower jaw or mandible.



Locate the nostrils and label





Locate and note the location of the  
eyes





Find the bony covering on each side of the fish's head called the operculum





Cut away operculum and look at gill

- Gill Arch

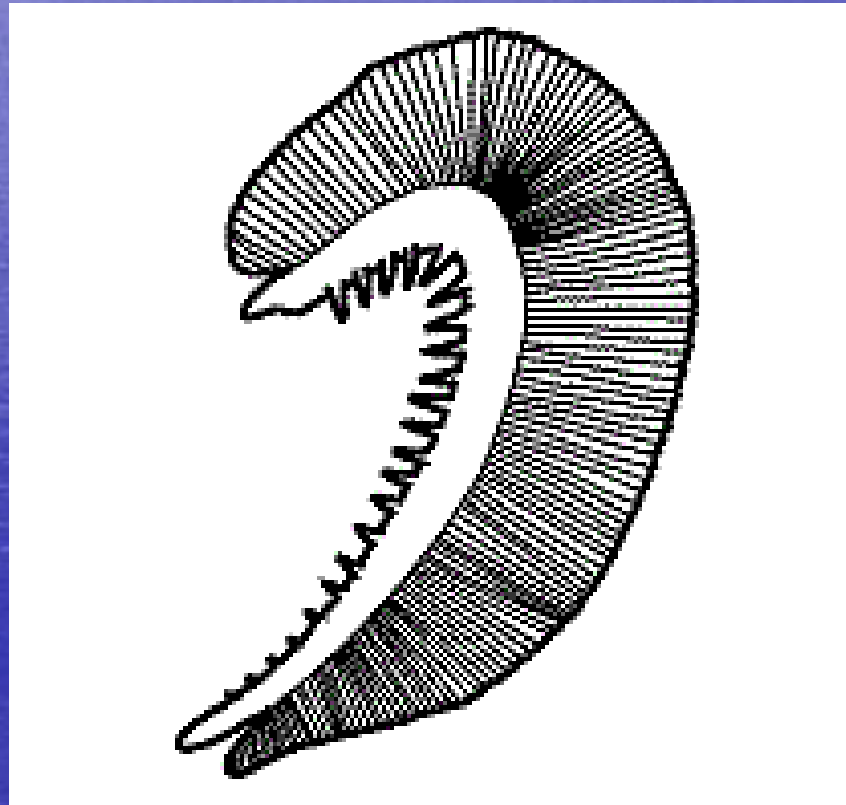




- Gill  
Filament



Find the cartilage support called the gill arch and the soft gill filaments that make up each gill. Label the parts





# Label the different fins on the perch

- Pectoral Fin

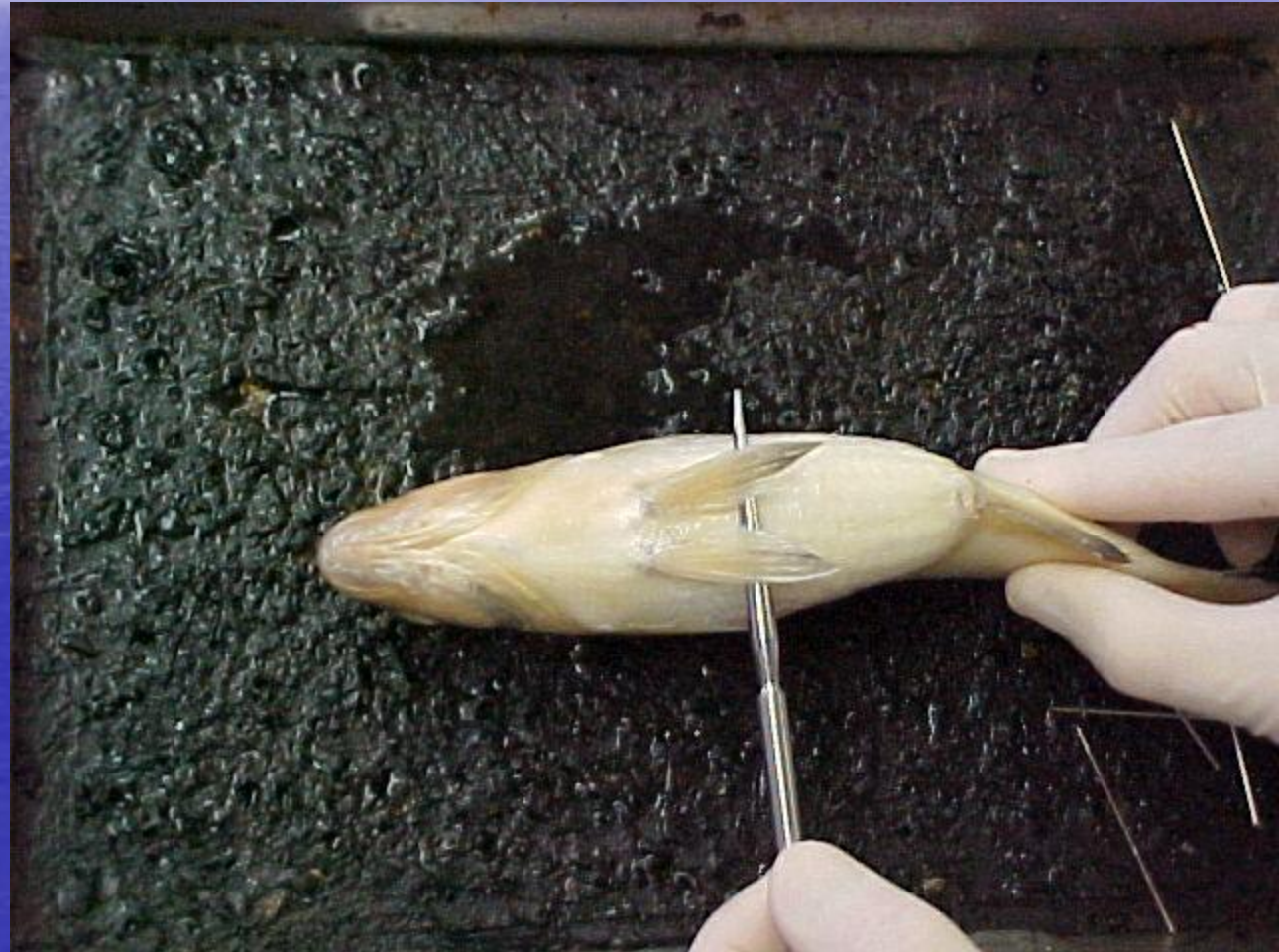


- Dorsal





- Pelvic Fin





- Anal Fin





- Caudal Fin



# LATERAL LINE





# Male Urogenital Pore



# ANUS







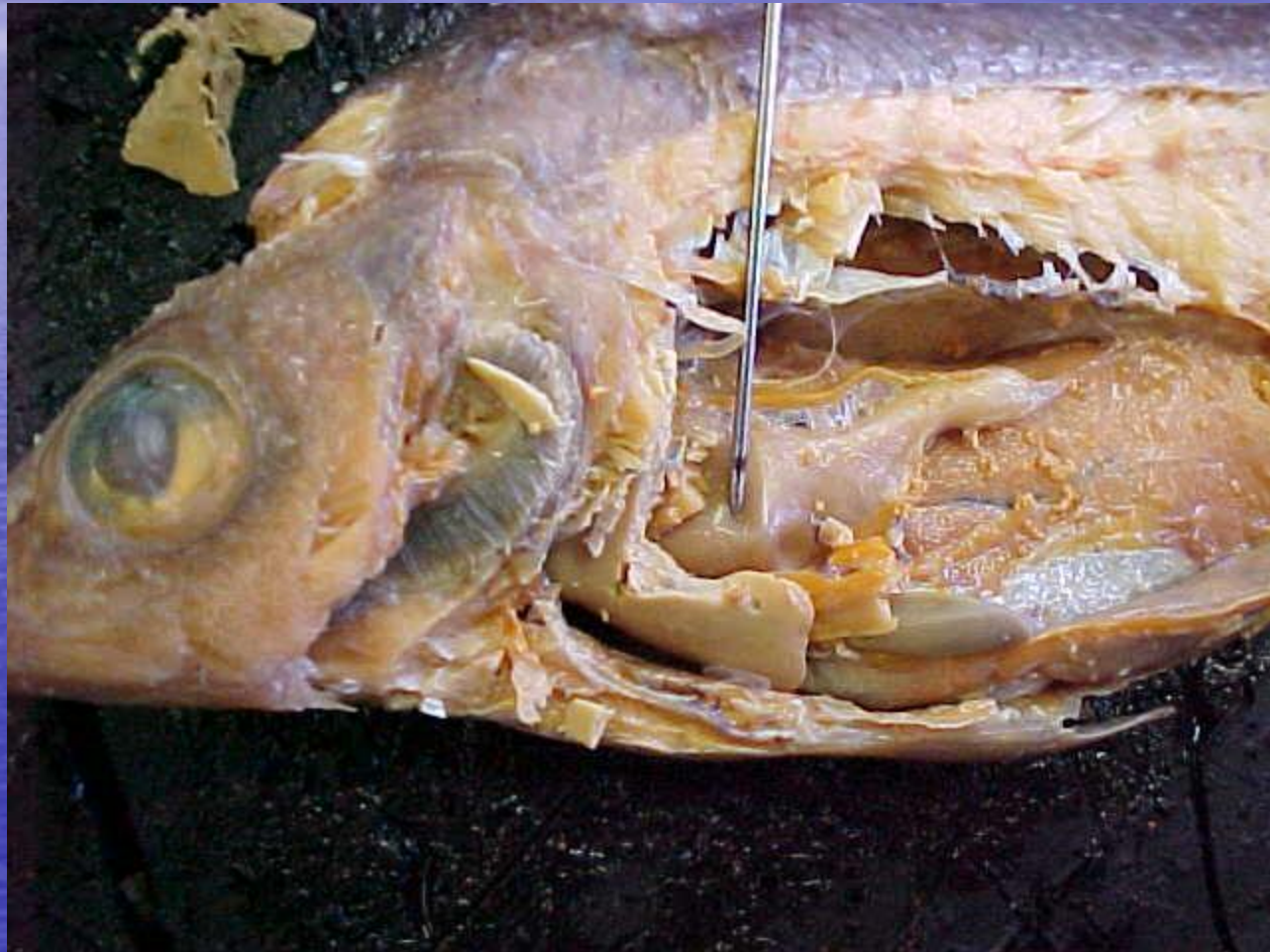
# INTERNAL ANATOMY

# LIVER



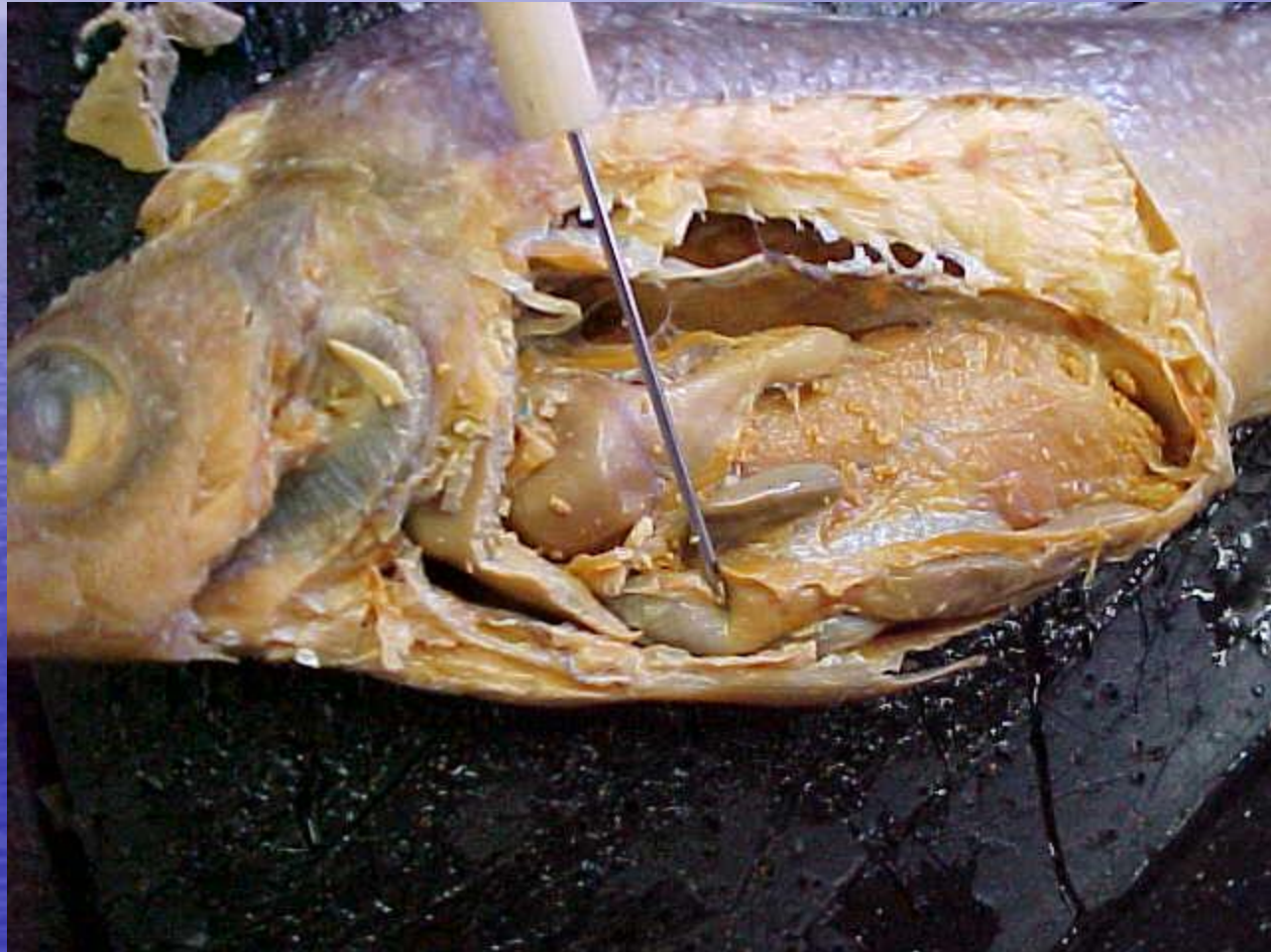


# STOMACH





# INTESTINE





# SPLEEN



# HEART





# SWIM BLADDER





# GONAD





IF YOU HAVE TIME.....TRY  
LOOKING AT THIS

BRAIN



# CEREBRUM





# OPTIC LOBES





# MEDULLA OBLONGATA





# OLFACTORY TRACT

