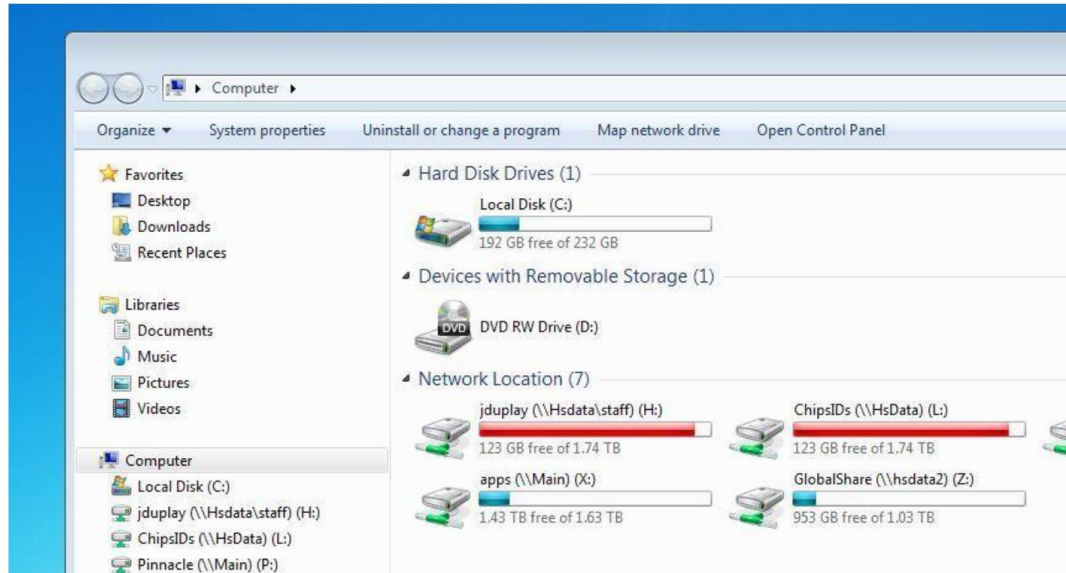
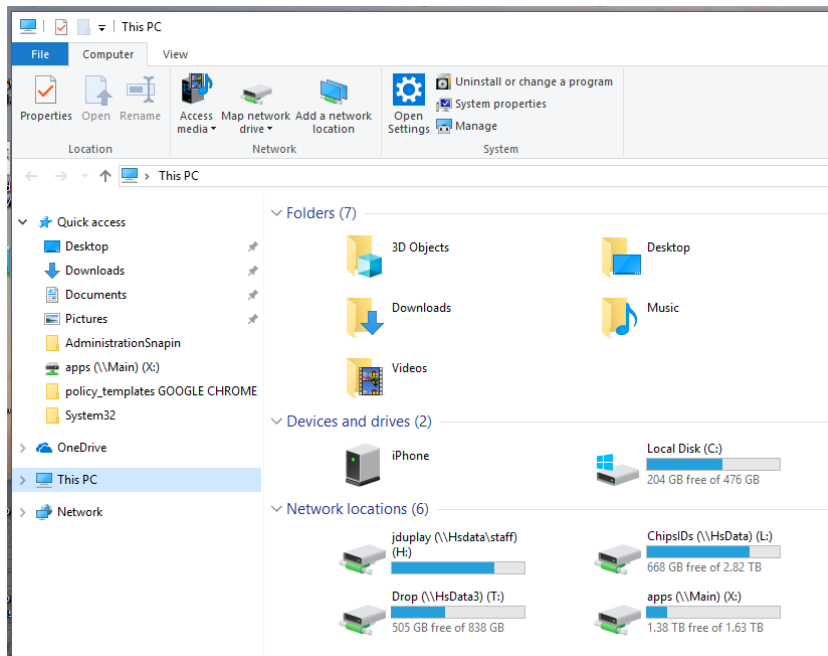


To install secure print...

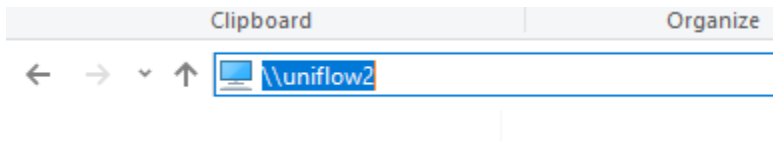
Step 1: On windows 7 – open “Computer” from the desktop.



On windows 10 – open “This PC” from the desktop.

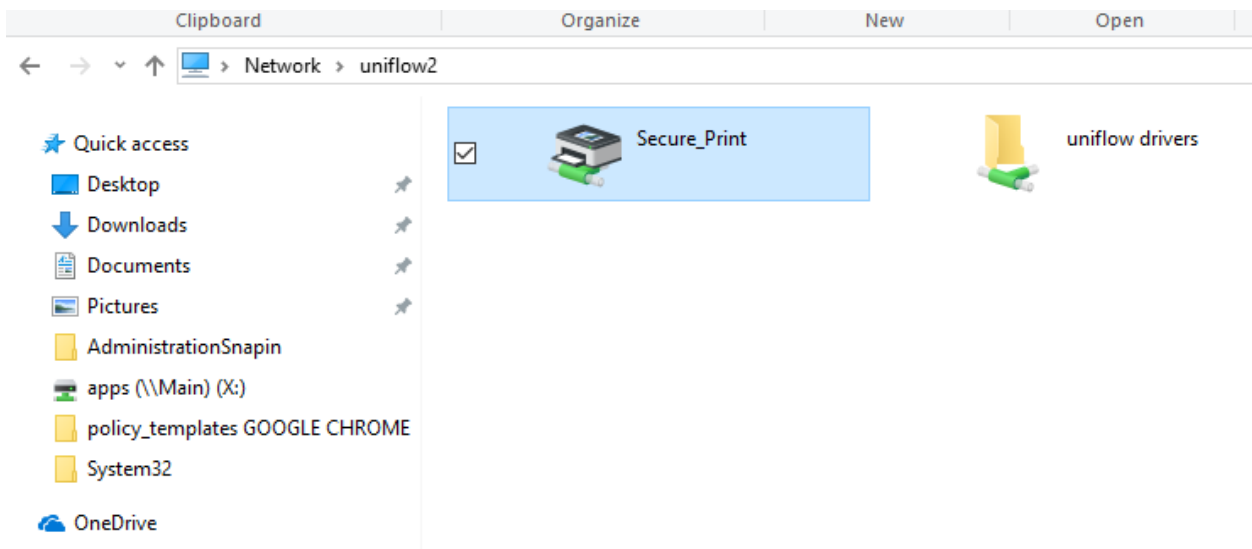


Step 2 – Highlight the top white bar which says “Computer” or “This Pc” and type [\\uniflow2](#) over it.

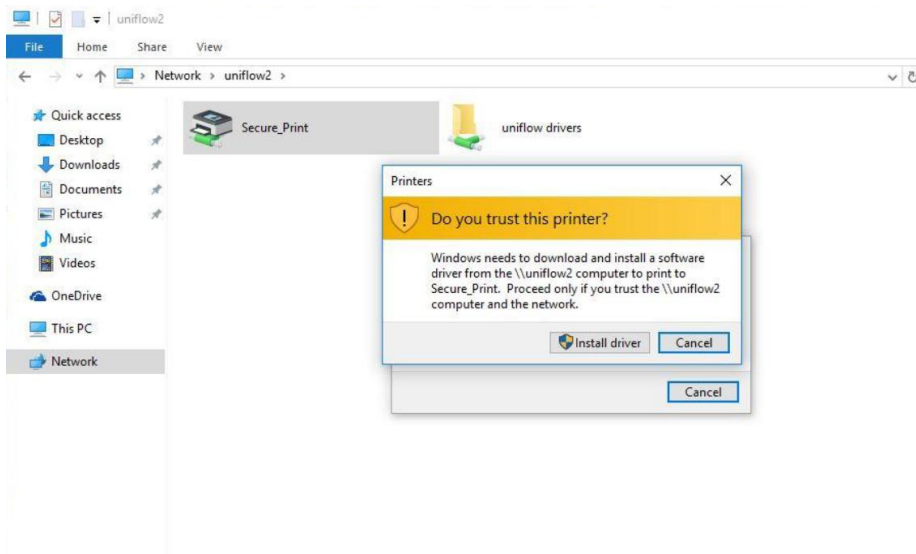


Hit enter.

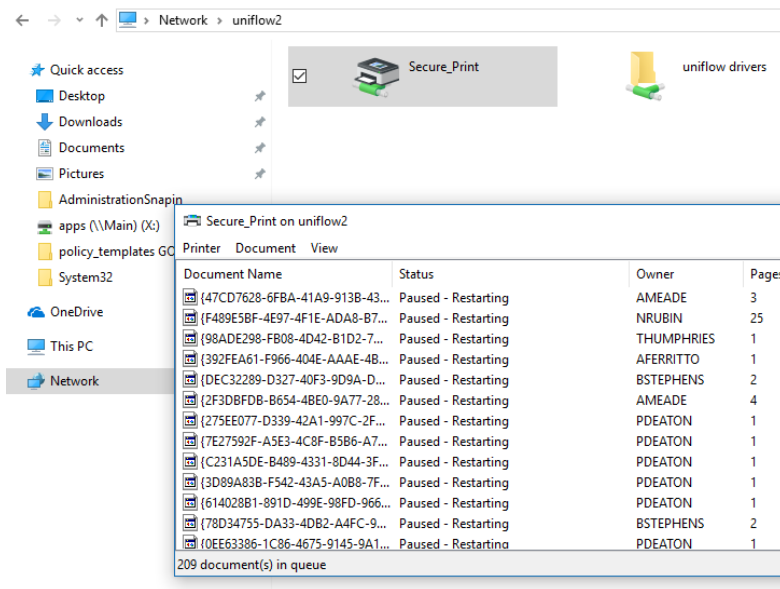
Step 3. – Double click on secure print



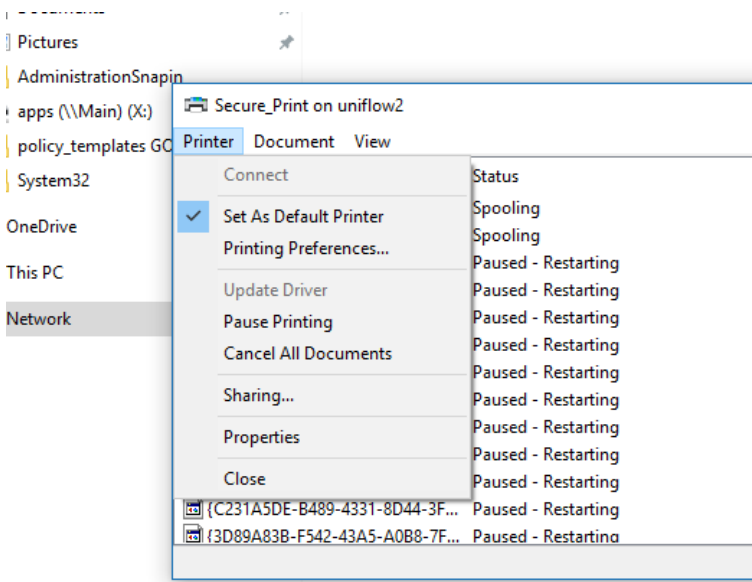
Step 4 – Install the driver.



Step 5 – Once you see the white box, the installation is complete.



Step 6 – From the white box you can set “Secure_Print” as your default printer.



Done....