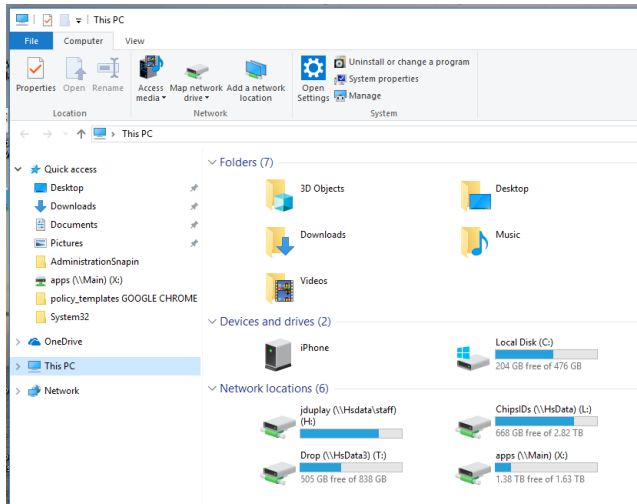
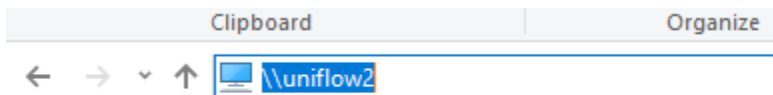


To install secure print...

Step 1: On windows 10 or 11 – open “This Pc” from the desktop.

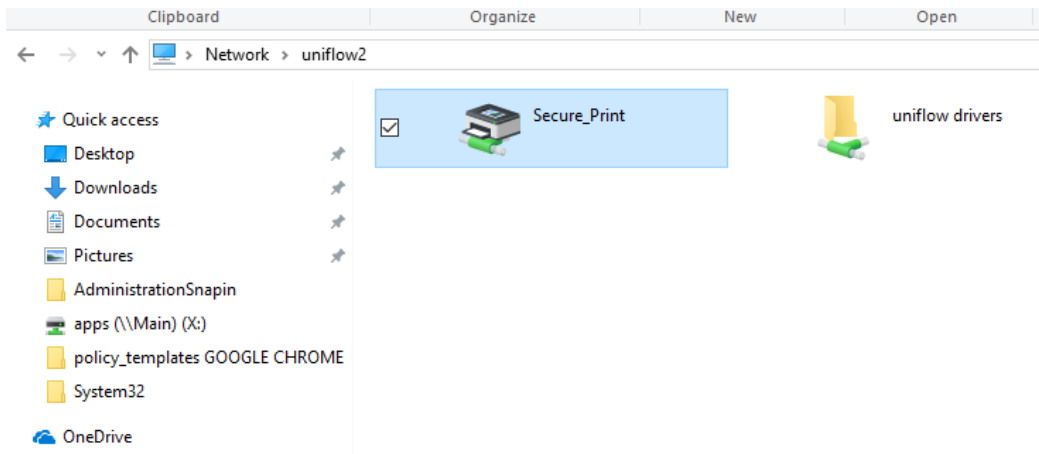


Step 2: Highlight the top white bar which says “This Pc” and type [\\uniflow2](#) over it.

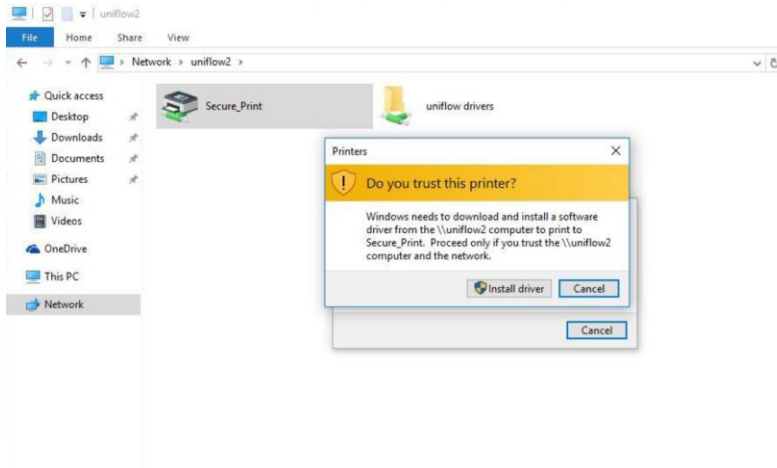


Hit enter.

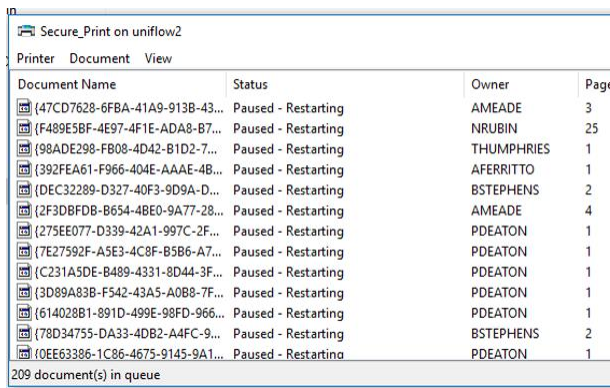
Step 3: Double click on secure print



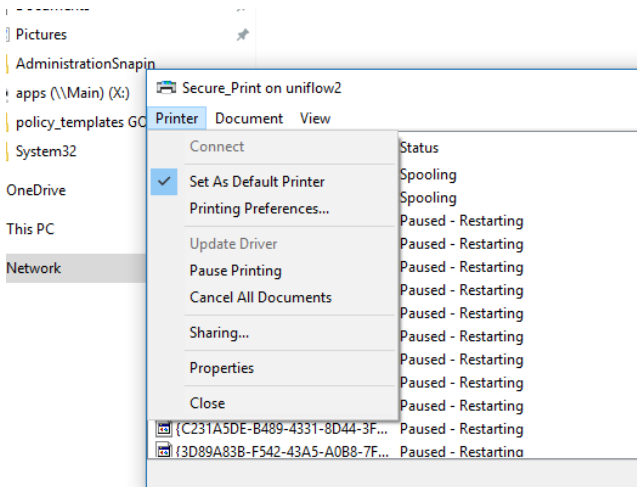
Step 4: Install the driver.



Step 5: Once you see the white box, the installation is complete.



Step 6: From the white box you can set "Secure_Print" as your default printer.



Done.